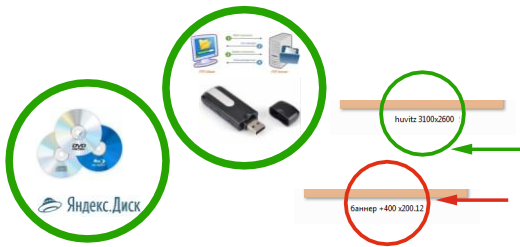


# Requirements for print layouts in large format and interior printing

## LAYOTS



### Materials for printing will only be accepted electronically as follows:

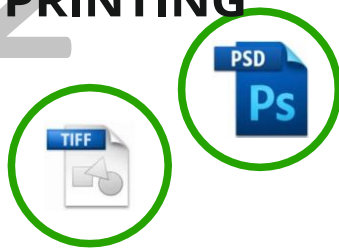
on external drives that do not require extra drivers installation connected directly to USB; uploaded to the ftp server (ftp address, login and password are required). Uploaded to file exchanges (link).

#### NOTE!

All file names should include characters "a"- "z", "A"- "Z", "0"- "9", "-", "\_".

**Cyrillic characters, punctuation symbols and system symbols "/?\*\|\" are not allowed in file names!**

## FILES FOR PRINTING



### Files must be in TIFF, PSD, CMYK 8 bits color mode (for OC Windows)

**The finished layout must be accompanied by a preview file (image) in JPG or PDF format.**

CMYK 8 bits color mode (for OC Windows). The file must not contain more than one layout. Layout scale 1:1

The file must not contain any extra Alpha Channels or Paths.

All layers must be merged into a single layer, Background. (Flatten Image or Merge Layers)

When processing files, embed ICC profiles are not taken into account, only colors percentage is important for printing.

Using ICC profiles can change color during printing.

To obtain solid black color according to **CMYK** the parameters must be as follows: **C 50%, M 50%, Y 50%, K 100%**.

Note that when printing on a banner mesh the color saturation deteriorates by 10%.

*We strongly recommend that you see the quality of your layout before submitting your image. To view the quality of the layout (image) in the Adobe Photoshop program, you must enter the View => Print Size.*

*Providing layouts for full-color TIFF bitmap printing is the best guarantee against unexpected file changes during printing.*

### Layout resolution (dpi)

Image size, m <sup>2</sup>	Layout resolution (pixels/inch)	Ready file size (max), Mb
from 1 to 18	150	150
18	72	300
From 18 to 36	36	500
From 36 and more	20	1000

*Please note that materials failing to meet technical requirements may cause printing defect. The printing vendor designer inspects materials on conformity to technical requirements but does not guarantee detection of all errors and discrepancies.*

### Take into consideration at file preparation

File resolution should be optimal. The insufficient file resolution will lead to appearance of appreciable pixels at manufacture of billboards and to "jagged" boundaries of lines. The redundant files resolution will considerably increase file processing but it will not improve printing quality. For large billboards which are installed at height and are visually perceived from a large distance, it is possible to reduce resolution up to 20-36 dpi. If pixels are visible at a short distance, at a distance of 10-20 meters they become indiscernible. Quality and resolution of initial pictures which you place in the layout for outdoor advertising manufacture is important. It is necessary to consider that an image which you see in A4 format not always looks the same in 3x6 m format and more.